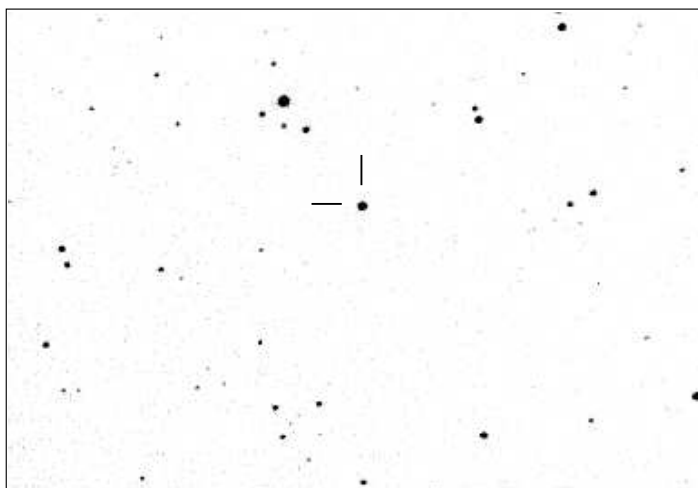
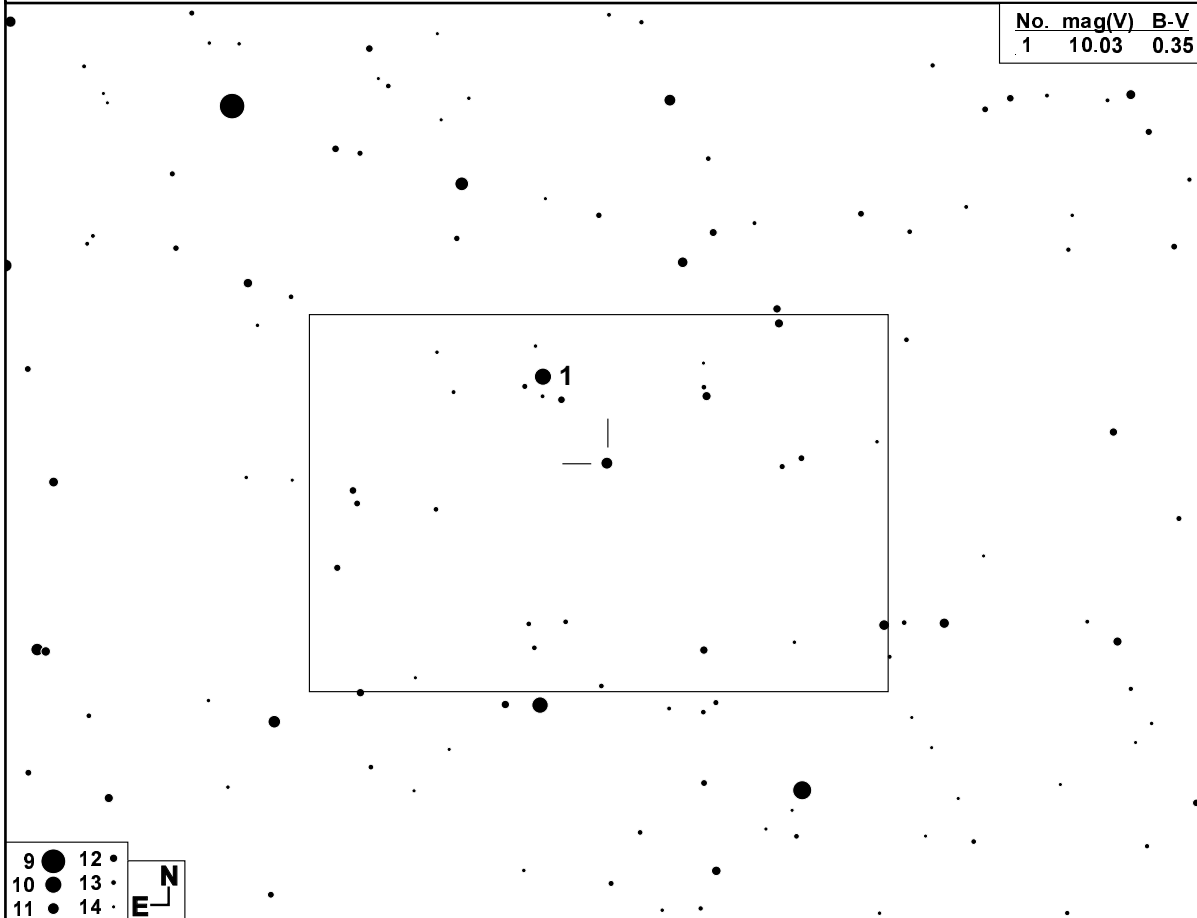


GSC 2083 1870

$\alpha = 17^{\text{h}} 33^{\text{m}} 28^{\text{s}}$
 $\delta = +26^{\circ} 55' 48''$
E 2000.0

Type: EW
11.0 - 11.4 mag (V)

No.	mag(V)	B-V
1	10.03	0.35



CCD Image:
04/05-07-2004
Hájek, Koss
Vyškov
RL 300/1200mm
CCD ST7
V filter
19' x 13' FOV
20-second exposure

Ref. stars:

Her	Her
$17^{\text{h}} 14^{\text{m}} 39^{\text{s}}$	$17^{\text{h}} 15^{\text{m}} 02^{\text{s}}$
$+14^{\circ} 23' 25''$	$+24^{\circ} 50' 23''$